



HEADOFFICE SCHURMAN GROUP, ALKMAAR, THE NETHERLANDS

BEKKERING | ADAMS
ARCHITECTEN | BV

SCHUURMAN

DESIGN FOR THE HEADOFFICE OF SCHUURMAN GROUP IN ALKMAAR, THE NETHERLANDS



situation

The accommodation for the Schuurman Group is situated on the business area Boekelermeer in Alkmaar, a small town in the north of the Netherlands. This prime location is seen from the highway A9 and is adjacent to a natural reserve. To profit from the qualities of the location, the building is designed as a freestanding object, whereby each side has its own specific character and appearance.

The volume is uplifted at the corners to give room to the special functions of the program. The strong lines of the exterior give the building a distinct expression and allow the landscape to flow through the building.

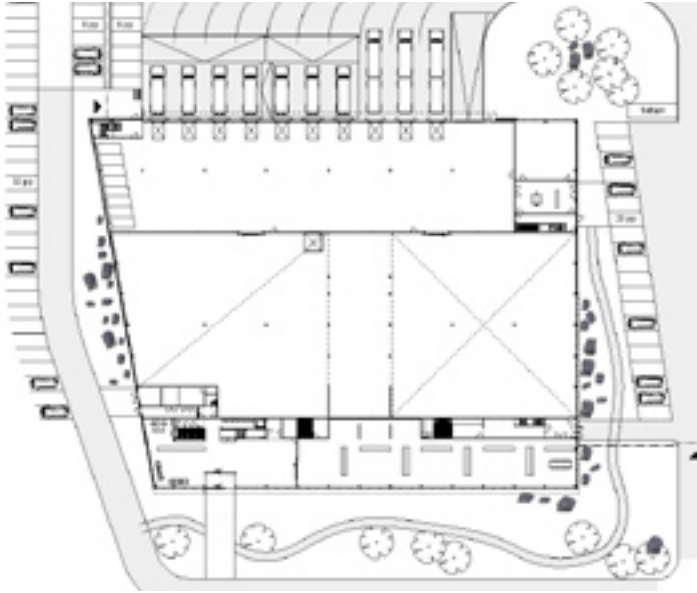
The building has an efficient layout with a warehouse area of 12-meter high and 3 floors of office space. On the top floor a patio-garden across the building brings light deep into the building. It also provides a visual and physical link between the offices and the warehouse-area. In this way the patio works as an important spatial, as well as organising element, while connecting the warehouse and office space.

In the building several sustainable measures are incorporated, such as concrete floor slabs as thermal active system, subterranean hot & cold storage, and a low energy lighting and control system, set up as a Philip's pilot project.

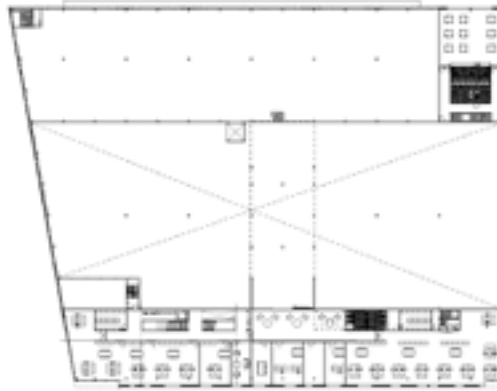
location:	Business area Boekelermeer, Alkmaar
address:	Fluorietweg 29
program:	9105 m2 offices, showroom and warehouse
client:	Schuurman Groep
design:	2004-07
start construction:	2007
completion:	Summer 2008
design team:	Juliette Bekkering, Monica Adams, Frank Venhorst, Vincent Hector, Lukas Heiniger, Michel Leunis, Paul Michielsens, Sander van Schaik, Albert-Jan Vermeulen, Manuel Aust.



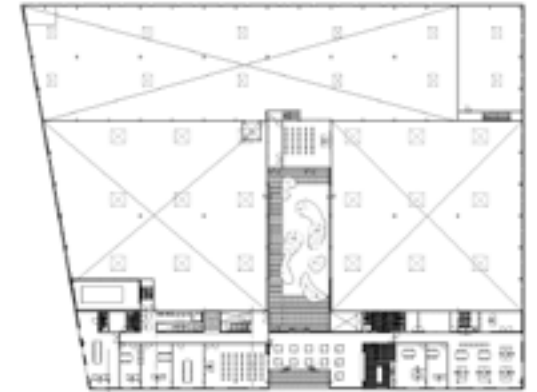




ground floor



first floor

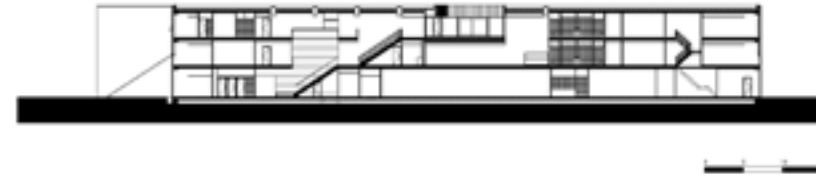


second floor

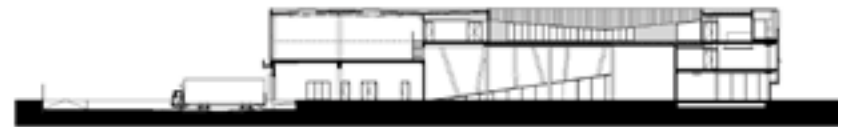




situation drawing



Longitudinal section



Cross section





daylight control saving energy for lighting

precise orientation towards the sun



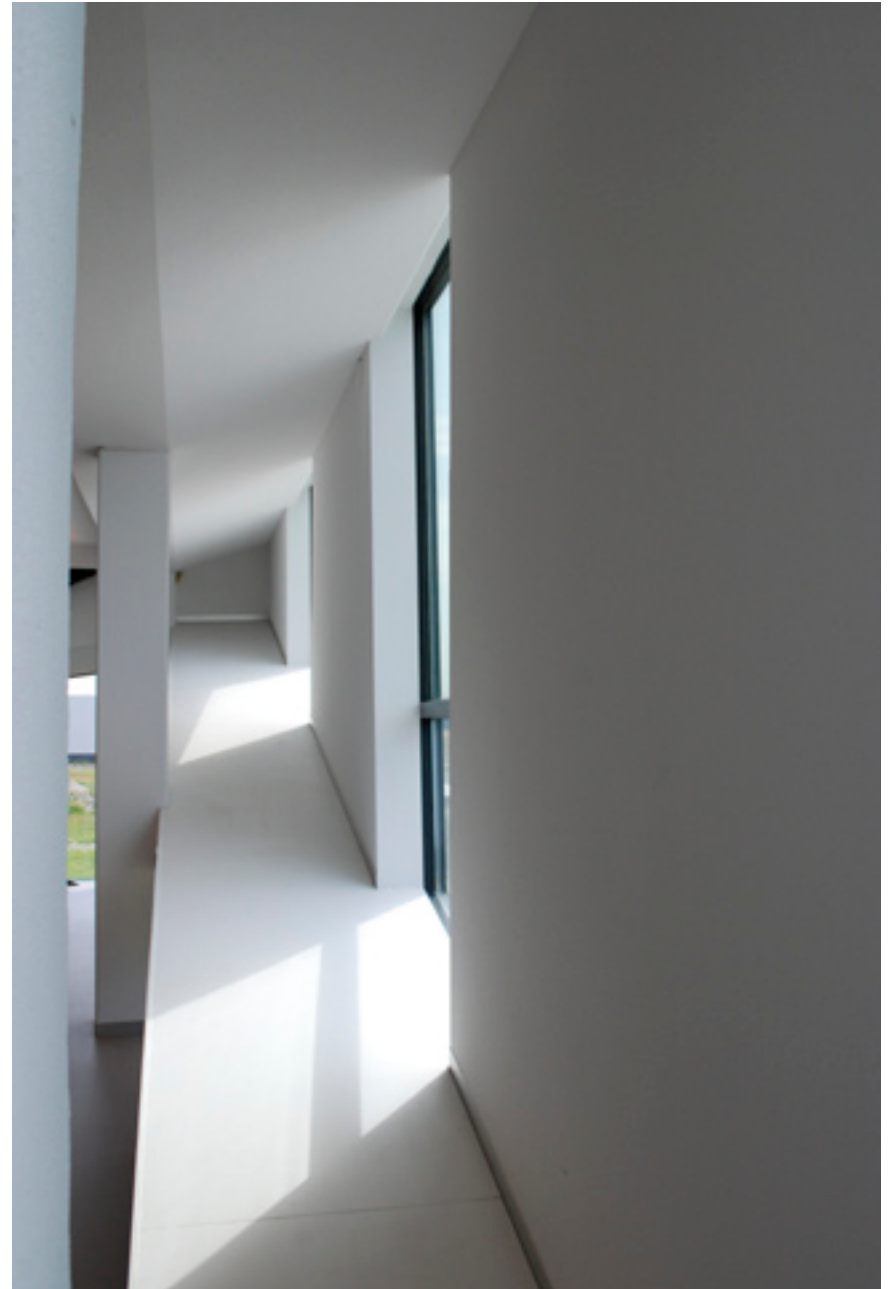
flexible workspaces



subterranean hot & cold storage

concrete floorslabs as a thermal active system







BEKKERING | ADAMS ARCHITECTEN | BV

Sint Jobsweg 30 3024 EJ Rotterdam NL
t.0031(0)10 4258166 f.0031(0)10 4258946

info@bekingodams.nl
www.bekingodams.nl



Photography: Christian Richters, Tessa Schaap, Juliette Bekkering